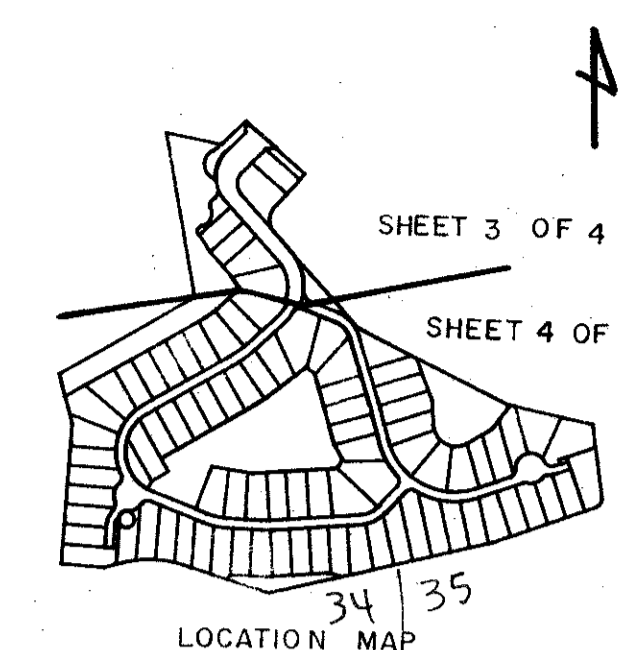
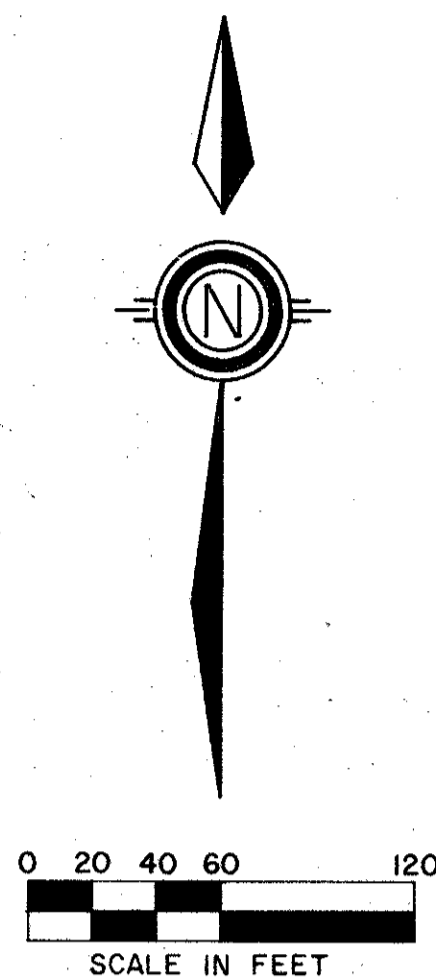


THE LAKES OF SUTTON PLACE

PART OF THE POLO CLUB P.U.D.
 BEING A REPLAT OF A PORTION OF TRACT II, "THE POLO CLUB PLAT II" (P.B. 57 PGS. 46 - 49)
 SITUATE IN SECTIONS 34 AND 35, TOWNSHIP 46 SOUTH, RANGE 42 EAST
 PALM BEACH COUNTY, FLORIDA

1988

SHEET 4 OF 4



STATE OF FLORIDA
 COUNTY OF PALM BEACH
 THIS PLAN WAS FILED FOR
 RECORD _____ DAY OF _____
 AD, 1988 AND DULY RECORDED
 IN PLAT BOOK _____ ON PAGES
 _____ AND _____
 JOHN B. DUNKLE, CLERK
 BY: _____, D.C.



NO.	RADIUS	LENGTH	DELTA
C1	25.00'	32.59'	74°41'57"
C2	25.00'	36.49'	83°37'14"
C3	47.00'	53.26'	64°55'47"
C4	47.00'	49.03'	59°45'56"
C5	25.00'	25.57'	58°36'43"
C6	47.00'	57.82'	70°28'58"

0436-009 60/94

STANLEY/WANTMAN, INC.
 2000 LOMBARD STREET, WEST PALM BEACH, FL. 33407 (808) 842-7444

DRAWN	M.H.C.	DATE	MARCH, 1988
CHECKED	W.B.H.	SCALE	1"=60'
DRAWING NO.	09676PL		

THE LAKES OF SUTTON PLACE
 PART OF
 THE POLO CLUB P.U.D.

Handwritten notes:
 7/1/88
 SEE DETAIL "D"
 SEE DETAIL "C"
 SEE DETAIL "A"
 SEE DETAIL "E"
 SEE DETAIL "B"

Vertical handwritten note:
 PLAT IS IN TRACT L A-1988 MHC.